

NORTHLAND FOR AUSSIES



This image was photoshopped, there are no kangaroos in Northland

WWW.NORTHLANDNZ.COM



NORTHLAND SNOW



A WARM WELCOME TO NORTHLAND

A place of freedom and with space to breathe, Northland is a dynamic combination of natural resources joined with the warmth, spirit and determination of a proud and resourceful people. With ancient kauri forests and lush native bush, numerous islands and a myriad of secluded beaches, every forest, bay and shore has a story to tell. The region has a rich history that ties both Maori and Non-Maori people together. The Maori people of Northland wear their culture with pride, and enjoy bringing their history and culture alive. Anywhere you go in Northland, you will find a story of the past, and whether it is through one of the many intricate bone carved necklaces or one of the visual shows, museums, waka trips or night walks in virgin native bush, the spirit of the people of the land will embrace you.

Beautiful subtropical Northland, where the sun shines brightly, the grass grows greener and the water is warmer. Yes it does rain sometimes, but that's what you get in a sub-tropical climate, and that rain helps our scrummy fruit and produce grow and allows you to enjoy some of the lushest scenery in the country. Slap on your sun block, slip on your thongs (we call them jandals in New Zealand!) and whatever the season, come on over and enjoy our beautiful landscapes, feel the warmth of some awesome Kiwi hospitality, devour our fresh homegrown kai (food), learn about our culture and explore our land. Okay, so it does cool down a little bit in winter, and you might have to wear shoes sometimes, but Northland doesn't do snow or sub-zero so you can still leave your floor-length winter coats behind.

GET INTO THE ACTION

Go on a quiet walk through serene forests or sand toboggan down massive sand dunes. Tour Northland's beaches by horse, quad bikes or sand bus or play a round of golf with a view. Explore the artistic treasures of Northland's creative community or de-stress at a day spa. Sail in a tall ship, swim with dolphins, kayak around the secluded bays or charter a launch and spend the day big game fishing. Modern marinas and sheltered anchorage provide great fishing, diving and sailing. Explore the world's largest underwater cave and the sunken ships which play host to all kinds of marine species.

CHILL OUT AND TUCK IN

Eating has always been a huge part of the travel experience, so tantalize your taste buds, tuck in and really get a taste of Northland, where Vegemite is still Vegemite, but where we buy our ice creams from dairies not milk bars and an esky is a chilly bin. Apart from the odd play on words though, we all pretty much speak in the same tongue when it comes to what we're putting in our stomachs. If you love fresh and tasty, then you've come to the right place. Taste the flavour of fresh locally grown produce – avocados, macadamia nuts, citrus and other fruits. And from the sea, smoked marlin, Orongo Bay oysters and a multitude of other seafood delights.

SLEEP WELL

Northland has a variety of accommodation options to suit different needs and price ranges. Luxuriate in a seaside lodge, a hotel perched on the beach or enjoy an eco stay in the bush, the choice is yours. Hidden in greenery, nestled in perfect bays, perched on hills or set amidst gardens and native bush, these character retreats are a delightful part of the Northland landscape.

EAST COAST WHANGAREI REGION: WAIPU AND TUTUKAKA

Waipu Museum, www.waipumuseum.co.nz

Experience the story of a determined Gaelic community overcoming loss, injustice, poverty, and disease. Building their own ships and travelling, unassisted, to "the ends of the earth", via Nova Scotia, Adelaide and Melbourne to Waipu, in Northland New Zealand, in search of a better way of life. The legacy of this today is a vibrant community, immensely proud of its Highland origins whose remarkable story is told at Waipu Museum.

Discover the unique story told through innovative displays and audio visuals. Gift shop with quality local and New Zealand products and souvenirs, including hand woven tartan rugs.

Dive! Tutukaka, www.diving.co.nz

Dive! Tutukaka is New Zealand's largest dive operator and has six boats running snorkeling, sightseeing and operating dive trips out to the Poor Knights Islands Marine Reserve. The Poor Knights Islands have a rich cultural heritage and biodiversity and are pending World Heritage Status. The friendly and professional crew delivers the ultimate in customer service, with an unmatched professionalism and safety record since 1999.

The latest product Perfect Day Ocean Cruise caters for the non-diver, with an interpretative eco-tour of the Poor Knights Islands involving sightseeing, kayaking, snorkeling, and dolphin-swimming options.

EAST COAST: BAY OF ISLANDS

Carino Sailing & Dolphin Adventures, www.sailingdolphins.co.nz

Come sailing on Carino NZ. Help to hoist sails or sit back and relax as the sails catch the breeze and the 50ft catamaran skims across the waves. We sail amongst the 144 islands that are the beautiful Bay of Islands. We are the only yacht licensed to swim and view wild dolphins in the Bay. We have several favourite islands where your skipper will find a calm cove, to enjoy a wide range of activities.

Snorkelling tours, scenic walks, beach games and swimming. BBQ lunch aboard Carino NZ, with a fully licensed bar. Departs Paihia & Russell daily 9.30am, returns 3.45pm

Culture North, www.culturenorth.co.nz

Culture North specialises in what is unique to Northland Maori, from the time of Kupe, the first discoverer of this land to the present. The Culture North Night Show – vibrant Maori culture and theatrical drama combine to depict the culture and 100 year old story of New Zealand and the Treaty of Waitangi.

Duration 2 hours. \$60 pp Guided Paihia, Waitangi and Te Tii Tour – introducing the story of the Bay of Islands for coach tours. Exclusive tailor made tours.

Darryl's Dinner Cruise, www.dinnercruise.co.nz

Evening Cruise – the only evening dinner cruise in the Bay of Islands. View the beautiful Haruru Falls with Darryl and his team in a fun and enlightening evening. The dinner selection caters to all tastes with a distinctive New Zealand flavour. Commentary on local history and wildlife. Lunch cruise to Russell.

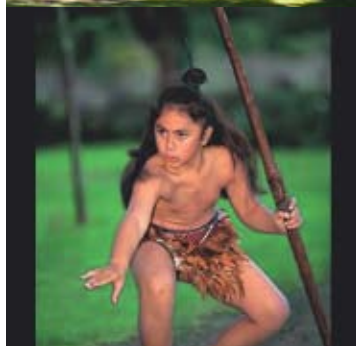
The Alma G Experience – a 1920's game fishing boat made famous by legendary fisherman and author Zane Grey. Fully rebuilt with a cruising speed of 18 knots. Sport fishing for marlin, tuna, and mahimahi for up to four anglers.

Explore NZ / Dolphin Discoveries / Sail NZ / Dunerider, www.explorenz.co.nz

Explore NZ is a progressive and dynamic company offering an exciting range of marine and land based excursions in both the Bay of Islands and Auckland. In the beautiful Bay of Islands Explore NZ offers unforgettable swimming with dolphins, cruising the 'Hole in the Rock' and viewing dolphins, sail on New Zealand's fastest commercial catamaran or discovering the majestic Far North 'off-road' including Cape Reinga.

The company owns and operates Sail NZ 'On the Edge', Dolphin Discoveries and Dune Rider in Northland. Explore NZ - Sail NZ was recently voted most exciting Tourism Company by National Business Review magazine.





EAST COAST: BAY OF ISLANDS

Fullers GreatSights Bay of Islands, www.dolphincruises.co.nz

Fullers GreatSights Bay of Islands is one of the founding tourism operators in the Bay of Islands. We trace our roots back to 1886, where the first island deliveries took place. By 1927, the first tourism cruise was established which still operates today as the original Cream Trip.

Today we operate the most comprehensive range of tours and cruises in Northland, including Ipipiri - an overnight cruise in the Bay. Swim with dolphins, overnight on Ipipiri, take an exhilarating fast boat adventure or journey up 90 mile beach to Cape Reinga, experience it to the full with Fullers GreatSights Bay of Islands.

R Tucker Thompson, www.tucker.co.nz

Come sailing on Northland's own iconic tall ship the R. Tucker Thompson! Often voted the best day of any holiday, it's an experience not to be missed. The day is an interactive experience where guests can help set the sails, ride the bowsprit, climb the rigging, or alternatively relax while the crew does the work.

Morning cream tea and a BBQ lunch are included. For those short of time, the Late Afternoon Cruises offer a gentle sail from Russell to Opuia on Wed, Fri and Sundays. The ship is operated as a not-for profit charitable trust with profits from day sail activities being used to subsidise youth sail training programmes and maintain the ship.

Salt Air, www.saltair.co.nz

Salt Air has been operating scenic flights in the Bay of Islands and Northland since 1992. The Cape Reinga ½ day fly/drive experience offers an opportunity to view Northland in a way not otherwise possible. A guided vehicle tour of the magical Cape Reinga area also included. An unforgettable experience.

Day tours from Auckland to Cape Reinga and Bay of Islands have become possible with the introduction of Salt Air Xpress. Scheduled departures daily incorporate transportation from Auckland city. An extensive range of helicopter scenic flights ex Paihia's Waterfront helipad has something for everyone. Northland - best seen from above

The Rock, www.rocktheboat.co.nz

The Rock is New Zealand's biggest house-boat; she is purpose built and offers a warm, homely, stable environment for cruising the Bay of Islands. With a capacity of 36, the Rock is suitable for travellers of all ages who enjoy great company, new experiences, and who don't mind getting their feet wet. To enjoy the stunning scenery, cabins are on the second storey, have picture windows and balcony access to observation decks. Downstairs has a fire, bar, piano, pool-table, lounge/dining areas and a fishing/kayaking deck.

Onboard activities include kayaking, snorkelling, fishing, island walks and more. Sarah and Jonny, the owners of The Rock, strive to create memorable experiences and deliver the best value.

Waitangi Treaty Grounds, www.waitangi.net.nz

The Waitangi Treaty Grounds is New Zealand's most historic site and is the place where the New Zealand's founding document was signed between Maori chiefs and the British Crown. The grounds feature the Treaty House, a fully carved Maori Meeting House, one of the largest Maori war canoes, native bird life, heritage gardens, bush tracks and stunning sea views of the Bay of Islands. Year round Waitangi offers guided tours.

In summer a variety of shows and options are available: Showtime Kapa Haka, fun with flax art, guided garden tours, history tours, easy Maori language classes and evening shows and dinner options.

Waka Taiamai Tours, www.taiamaitours.co.nz

A rare and unique insight into the power and beauty of our Northland Maori Culture awaits you. The Waka remains culturally significant and important to all our people. That we still retain our ancient Waka traditions and customs is testimony to the power of the Waka as a symbol of Maori identity and pride.

Through our Qualmark endorsed Waka voyages and activities, our traditional past time you! are given a once in a lifetime opportunity to experience the power and spirituality of this cultural Icon whilst enduring firsthand the ways of our Ancestors from a bygone age.

EAST COAST: BAY OF ISLANDS

Bushman's Friend, www.bushmansfriend.co.nz

Forty minutes north of the Bay of Islands, Bushman's Friend offers a range of eco-experiences for you to experience the beautiful and singularly romantic Whangaroa Harbour.

Whangaroa Harbour tours - Whangaroa Houseboat Holidays - Guided bush walks - Kayak hire - Whangaroa Harbour taxi. Your local guide Tony Foster shares his love of the forest and sea conveying a strong sense of knowledge and care for the environment --stories of the flora and fauna, geology, history of the land, the people and the harbour. A unique and personalised "off the beaten track" experience.



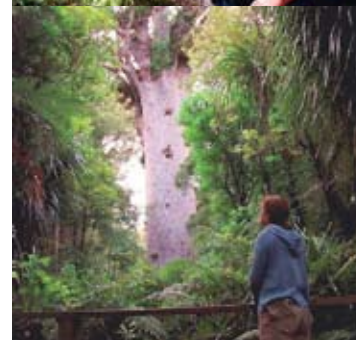
WEST COAST: HOKIANGA AND KAURI COAST

Footprints Waipoua, www.footprintswaipoua.co.nz

Footprints Waipoua is one of 82 global "Experiences of a Lifetime" so says Lonely Planet's publication Code Green. Locally owned and operated, Footprints provides an opportunity to connect, view, listen and learn about the oldest and largest kauri trees in the world. Footprints Waipoua's signature four hour night walk, "Twilight Encounter", takes visitors into the forest when seeing is replaced with listening and when the clouds and sun are replaced by stars and the moon. Enjoy the songs and stories, enjoy a spiritual, natural and cultural experience of a lifetime in the company of friendly, experienced local Maori guides.

The Kauri Museum, www.kaurimuseum.com

Northland's largest undercover attraction is located at Matakoho, 140kms north of Auckland en route to giant kauri trees in Waipoua Forest. This museum is a 'must see' for anyone travelling to the Bay of Islands. Due to extensive logging activities by early settlers, the magnificent kauri tree stands of the past are now reduced to small pockets. The Kauri Museum provides an insight into the life of the pioneers. Comprehensive displays include the worlds largest collection of kauri gum, massive kauri slabs, some up to 45,000 years old, and a fine collection of antique kauri furniture. Original early photos provide a fascinating window into the past. We at least recommend two hours to explore this museum.



EAST COAST WHANGAREI REGION: PATAUA

Tahi, www.tahibeach.com

Tahi is a 742 acre privately owned eco property situated on the Pacific Ocean 30 minutes from Whangarei city. From a private sandy surf beach, to a flat water estuary - wetlands to farmland, flat land to valley systems, and more than 225 acres of native NZ forest to explore, Tahi is an intimate retreat for the environmentally aware, with two self contained luxury bungalows: Hiwi and Mara. The bungalows have been renovated using local materials. Rainwater is collected for drinking and household usage, and seasonal organic vegetables, fruit and honey that have been grown on the property make your visit comfortable and sustainable. Both bungalows are fully equipped with TV, CD, DVD, Wi-Fi and iPod connections.

NORTHLAND ACCOMMODATION



EAST COAST: BAY OF ISLANDS

Avalon Resort, www.avalonresort.co.nz

Avalon is a luxury resort, located in a secluded valley, 500m from Kerikeri town. It has four self contained cottages plus a guest apartment on a big seven acre property with spring fed lakes, streams and a river and wide views over the golf course. The luxury one bedroom cottages sleep up to four guests on king size and sofa beds. A fully equipped modern kitchen, a bathroom with bath and shower and TV, DVD and Wi-Fi internet facilities make a very comfortable and relaxed stay. The cottages are decorated with stylish contemporary teak furniture and hardwood flooring and have covered decks with steps leading to private gardens with sun loungers and safe parking at the back.



Eagles Nest, www.eaglesnest.co.nz

Eagles Nest is a multi award winning 75 acre retreat situated in New Zealand's spectacular Bay of Islands. Designed and furnished in an eclectic contemporary style. The estate's gardens and lodgings blend into the natural topography and foliage. Eagles Nest is within walking distance of the historic village of Russell, the birth place of New Zealand. Each of the estates five world-class Luxury Villas feature private heated infinity edge pools, Jacuzzis, air conditioning, home theatre systems and fully equipped gourmet kitchens. Talented resident chefs prepare original cuisine perfectly matched with superb New Zealand wines.





EAST COAST: BAY OF ISLANDS

Paihia Beach Resort and Spa Hotel, www.paihiabeach.co.nz

Paihia Beach Resort and Spa Hotel has re-opened after an extensive refurbishment. Ultra chic rooms boast superior entertaining areas, large flat screen TVs and French oak timber flooring. Extended private guest suite patios provide for private massage areas and alfresco in-room dining. The resort overlooks Paihia's most picturesque beach and is in walking distance of Paihia wharf. Indulge your taste buds in the freshest Northland cuisine at the poolside and ocean view restaurant Puretastes. Visit 'La Spa Naturale', one the top 10 Spa's in Australasia (Conde Nast UK), and experience treatments with a uniquely New Zealand flavour.

Scenic Hotel Bay of Islands, www.scenichotels.co.nz

114 rooms set amongst expansive subtropical gardens enhance the atmosphere of this resort-style hotel. All rooms have LCD televisions and entertainment centres, direct dial phones, tea and coffee making facilities, mini bar, ironing facilities, hairdryers and internet access. Room configuration varies from twin, queen/queen, and super king to queen single rooms. The Hotel has 6 wheel chair accessible rooms complete with shower areas. Casual dining in a relaxed atmosphere can be enjoyed in the restaurant and bar area. A la carte and buffet options are available. Scenic Hotel Bay of Islands is 10 minutes walk from Paihia wharf, and only minutes to restaurants and bars.

Tanoa Hotel Group, www.tanoahotels.com

Tanoa Hotel Paihia Tanoa Hotel Paihia is situated in an attractive and peaceful bush setting within comfortable walking distance from the main Paihia shopping centre and the waterfront. It offers 66 well appointed rooms accommodating 2-4 persons and a 2 bedroom suite.

Russell Cottages Luxurious accommodation in a tranquil and historic location are just some of the reasons to make Russell Cottages your home away from home. The stand alone fully self-contained cottages can accommodate a maximum of 8 people in a cottage. The Cottages provide the perfect setting for all types of occasions...romantic getaways, weddings, honeymoons, reunions, family holidays, any type of holiday!

TOP OF THE NORTH: DOUBTLESS BAY & KARIKARI PENINSULA

Carrington Resort a Heritage Hotel, www.heritagehotels.co.nz/carrington

Situated on 3000 acres of rolling coastal land in Northland's Karikari Peninsula, Carrington is a five star retreat where privacy, sophistication and facility combine to leave an indelible impression. Carrington's extensive facilities are complemented by a range of on-site activities such as; golf on the internationally acclaimed course, clay shooting, horse riding, tennis, swimming, massage and winery tours and tasting at the adjoining vineyard and winery. Accommodation is in either lodge rooms or for a bit more space and privacy in fully self contained two bedroom villas offering views down the 15th fairway to the sand dunes and ocean beyond.

WEST COAST: HOKIANGA & KAURI COAST

Copthorne Hotel & Resort Hokianga, www.copthornehokianga.co.nz

Situated on the beautiful and historical Hokianga Harbour, the hotel features 32 guest room, many with stunning sea views. The restaurant features an a la carte menu, showcasing local and indigenous cuisine, fine Northland wines and crayfish caught and cooked to order. The bar has expansive decks and sensational views, and is the perfect place to unwind with a cool beverage. The bar offers an all day menu. Set in an unspoilt environment, with its own subtropical micro climate the Copthorne is just 1 hour drive from the Bay of Islands and provides an attractive alternative to the more mainstream locations.

Waipoua Lodge, www.waipoulodge.co.nz

Appointed to the highest Five Star standards, this historic and gracious lodge holds a guest lounge, bar, and dining room, and is set within a native landscape, where broad lawns sweep down to a forest walk and birdlife fills the trees. Relax by the crackling fire while the Chef prepares a gastronomic delight to accompany a fine wine from the bar. Four luxuriously appointed private apartments are private and separate to the lodge. Waipoua Lodge is the gateway to two wonders of the natural world – New Zealand's largest kauri forest sanctuary, and the crystal clear Kai Iwi Lakes. Few places in this world are so breathtaking and deserted – 3hrs from Auckland by road or ½ hour to our helipad.

NORTHLAND: IN A WEEK

DAY 1

- Drive from Auckland to Waipu (1.5 hours)
- Visit the Waipu Museum, and learn about the migration from Scotland to Nova Scotia via Adelaide and Melbourne to Waipu
- Lunch suggestion – Waipu Pizza Barn (check out the toilets!)
- Drive from Waipu to Pataua (approx 1 hour)
- Spend the afternoon in the bush and at the beach
- Stay: Tahi

DAY 2

- Drive from Pataua to Tutukaka (1 hour)
- At 11am depart on 'A Perfect Day' and explore the Poor Knights Islands Marine Reserve. A Perfect Day offers sight seeing, kayaking, cave explorations, snorkeling, swimming, sea mammal spotting, snippets of fascinating history plus great food. At 4pm return to Tutukaka and drive to the Bay of Islands (approx 1.5 hour)
- Stay: Bay of Islands
 - 3 star — Tanoa Paihia
 - 4 star — Scenic Hotel Paihia / Avalon Resort
 - 5 star — Paihia Beach Resort and Spa or Russell Cottages
 - Exclusive — Eagles Nest

DAY 3

Too much to choose from:

- Visit the Waitangi Treaty Grounds
- Take an overnight cruise
- Swim with dolphins or go on a Hole in the Rock Cruise
- Explore Cape Reinga by coach or fly / 4WD
- Go sailing on a tall ship or a fast catamaran
- Experience a cultural evening show
- Paddle on a Maori waka
- Finish the day with a Dinner Cruise
- Stay: Bay of Islands

DAY 4

- Drive to Whangaroa Harbour (40 minutes)
- Meet with Bushman's Friend for a harbour cruise or a guide walk
- Drive to Karikari Peninsula (approx 40 minutes)
- Play a game of golf, tennis or just relax
- Stay: Carrington Resort a Heritage Hotel

DAY 5

- Relax at Carrington or if you prefer an active day you can go horse riding, fishing, swimming, play golf, wine tasting or enjoy a massage
- Stay: Carrington Resort a Heritage Hotel

DAY 6

- Drive to the Hokianga (approx 1.5 hours)
- Visit the art galleries in Kohukohu and Rawene
- Night tours are available into Waipoua Forest. This is an intimate encounter to learn how the giant kauri trees are inter-twined with the lives of local Maori and the important role they play in the eco system
- Stay: Copthorne Hotel & Resort Hokianga or Waipoua Lodge

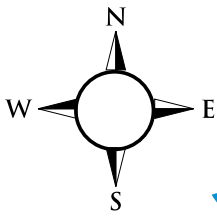
DAY 7

- Drive from Hokianga to Auckland (approx 4.5 hours)
- Make sure you visit the Kauri Museum in Matakoho, and discover the history of the kauri tree, its timber, gum, and the early pioneers to the region



P NORTHLAND Y





NEW ZEALAND'S FIRST NORTHLAND



GETTING TO NORTHLAND

Approximate drive times from Auckland are:

Bay of Islands	3 hours
Whangarei	2 hours
Doubtless Bay	4 hours
Dargaville	3 hours
Hokianga	4 hours
Kaitiaki	5 hours

KEY TO MAP

- Twin Coast Route
- Alternative Tourist Drives
- Other Roads



PO Box 365, Paihia 0247, Bay of Islands, New Zealand
P: +64 9 402 7683 | E: info@northlandnz.com

WWW.NORTHLANDNZ.COM